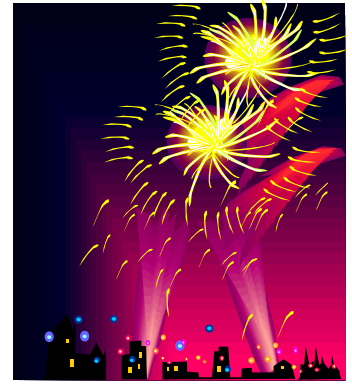


THE

# DOUBLEOUT

NEWSLETTER



Durham, NC

Joyce P. Owens – Editor/Statistician

Fax # 919-287-2384

### BCDL Calendar News

- Tue, Jul 04 Happy 4th of July (no darts)
- Tue, Jul 18 End of Regular Season
- Tue, Aug 08 Championship Night
- Sat/Sun, Aug 12-13 Awards Banquet TBD
- Tue, Aug 15 Registration ends Arnie's, 7-9pm
- Scheduling Meeting Arnie's, 9pm
- Tue, Aug 22 Start of Season 40 8:00pm

### Community Calendar

**Wednesdays** Raleigh Dart League  
8pm, Raleigh area

**Thursdays** Triangle Dart League  
8pm, Chapel Hill

June 22, 2006

### Annual Education Summit

MarketPlace

June 24, 2006

### Eastway Village Open House

## LEAGUE BARS



Arnie's Place 1725 Carpenter Fletcher Rd. Ste. 106  
Owner: Arnie Mariano 806-1441  
Charlie's Pub and Grill 758 9th Street  
Owner: Mike Cole 286-4446  
Doyle's Sports Bar 219A Chapel Hill Rd  
Owner: Dave & Jeff Doyle 419-9791  
Down Under Pub 802 W. Main St.  
Owner: Frank Lin 682-0039  
The Tavern 5404 Chapel Hill Rd  
Owner: Dave Oholendt 493-5957  
West End Tavern 1647 Cole Mill Rd  
Owners: Kyle Bartee & Paul Mann 383-9392

### Penalties

**3 Points** Capiains meetings Evulution

**11 points** Scoresheet Shoot to Thrill

### Tonight's Matches

#### Arnie's 1 & 2

Dee Dee Dee @ Puppies

#### Arnie's 5 & 6

Team America @ Whatever

#### Arnie's 9 & 10

The Grinnin' Gorillas @ Chapel Heel Boyz

#### Charlie's Pub and Grill 1 & 2

Poke 'N Hope @ W.T.F.A.Y.L.A.

#### Charlie's Pub and Grill 3 & 4

The Crackheads @ Strokin'

#### Doyles Sports Bar

Shoot to Thrill @ Scrabble

#### Down Under Pub

OPEN

#### The Tavern 1-4

OPEN

#### West End Tavern 1& 2

In Through the Out Door @ Evulution

#### West End Tavern 3& 4

Armed & Hammered @ More Cowbell

### Next Week Matches

None

### Happy 4<sup>th</sup> of July



### July 11<sup>th</sup> Matches

#### Arnie's 1 & 2

Poke 'N Hope @ The Grinnin' Gorillas

#### Arnie's 5 & 6

Puppies @ Whatever

#### Arnie's 9 & 10

W.T.F.A.Y.L.A. @ Chapel Heel Boyz

#### Charlie's Pub and Grill 1 & 2

Dee Dee Dee @ Team America

Charlie's Pub and Grill 3 & 4

More Cowbell @ Strokin'

#### Doyles Sports Bar

Evulution @ The Crackheads

### Down Under Pub

OPEN

#### The Tavern 1-4

OPEN

#### West End Tavern 1& 2

Shoot to Thrill @ Armed & Hammered

#### West End Tavern 3& 4

Scrabble @ In Through the Out Door

Hall of Shame 5/23

Armed & Hammered @ In Through the Out Door

Single 01 game Wil vs Kyle. Will lost with 37 darts thrown. Not divisible by 3.

### Rookie (s)

Pat Barrett 10.43

### Bar Request

Mike at Charlies request that we start having some meeting there or he will not be sponsoring any more teams. He will close off the entire back room for the LOD.

### Tournament

- o Week 1 – Tournament  
Top bracket:
- Top two teams in each division qualify for play  
Lower bracket/Consolation:
- Lower teams in each division qualify for play
- o Week 2 – Division Championship – seeded by season points  
Round 1 - #1 vs #4 and #2 vs #3
- o Week 3 – Division Championship
- o The handicap chart will not be used in consolation tournament

o Trophy allocations will be based on whole division

### Executive Council

#### President:

Wil James  
(h) 919-620-7365, (c) 919-599-4065  
[jupe270@yahoo.com](mailto:jupe270@yahoo.com)

#### Vice-President:

Don Moore  
(h) 919-493-2027, (c) 919-632-6218  
[discdon@hotmail.com](mailto:discdon@hotmail.com)

#### Secretary:

Barbara Garmon  
(h) 919-403-8048, (c) 919-624-0887  
[bargar111@aol.com](mailto:bargar111@aol.com)

#### Treasurer:

Peggy Jackson  
(h) 919-321-0691, (w) 919-683-8680  
(c) 919-441-6919  
[rdulawgirl@aol.com](mailto:rdulawgirl@aol.com)

#### Rules & Grievances:

Ed Chase  
(h) 919-768-1589, (c) 919-291-8946  
[race96red@aol.com](mailto:race96red@aol.com)

#### Social Director:

Darrell Coleman  
(h) 919-844-4274, (c) 919-306-2239  
[fristtymcaller@yahoo.com](mailto:fristtymcaller@yahoo.com)  
[dscoleman@bellsouth.net](mailto:dscoleman@bellsouth.net)

#### Public Relations:

Cyndi Chase  
(h) 919-768-1589  
[ccbeenchased@aol.com](mailto:ccbeenchased@aol.com)

### Friendly Reminder

Know the RULES and enjoy the game.  
If it's NOT listed on the score sheet it didn't happen...  
If in doubt, write it down...

### Eligibility

**Tournament:** 5 matches or 17 games

**Singles awards:** 12 games

**Overall awards:** 30 games

Note - for a player to be eligible for league awards the player must meet the requirements for that category as outlined in the BCDL by Laws Article XIV: Awards.

### Editor Notes

Packet drop off **Down Under Pub ONLY**.

Scoresheets:

Remember, it is the *winning* team that is responsible for getting their scoresheet to **Joyce P. Owens**. It must have a Wednesday postmark if

mailed, or be faxed by Wednesday to avoid penalties. Current penalties for late scoresheets are 5 points for a Thursday postmark or fax, 8 points for a Friday postmark or fax, and all points thereafter. The losing team should keep their copy. If the winning scoresheet is lost, the losing team will only get their points if they can produce their copy. The home team is responsible for picking the packet up before the match. It is the responsibility of both teams to verify that all information on the scoresheet is correct.

If any team needs to add a player throughout the season, they must first have the Executive Councils approval. Captains need to contact **Peggy Jackson** to do this. Approval is required 72 hours prior to the first match played. After approval, the new person must then be paid for before they play.

The **division median** for this season:

**A Division – 14.66**

**B Division – 10.93**

### Important Dates to Remember

Tue, Jul 04

Happy 4th of July (no darts)

Tue, Jul 18

End of Regular Season

Tue, Aug 08

Championship Night

Sat/Sun, Aug 12-13 Awards Banquet TBD

Tue, Aug 15 Registration ends Arnie's, 7-9pm

Scheduling Meeting Arnie's, 9pm

Tue, Aug 22 Start of Season 40 8:00pm

### Singles

#### Overall Singles

1Mike Seward	6-0	1.000
2Jerry Shengulette	10-1	0.909
3Donald Grubb	9-1	0.900
4Don Moore	11-2	0.846
5Michael Lovelace	8-2	0.800
Carl McMillon	8-2	0.800
7Tom Brown	11-3	0.786
8Mike Reynolds	7-2	0.778
Mark Knight	7-2	0.778
10 Ed Bahor	10-3	0.769
11 PJ Sullivan	9-3	0.750
Dave Annas	6-2	0.750
Joey Barber	6-2	0.750
14 Kenny Johnson	8-3	0.727
15 Wil Tan	5-2	0.714
Dale Hyler	5-2	0.714
17 Cee Jay Dozar	7-3	0.700
18 Dennis Keever	8-4	0.667
Adom Lubitz	8-4	0.667
Sal Reitano	4-2	0.667
Jim Hunsberger	4-2	0.667
22 John Strobel	7-4	0.636
Robby Crownover	7-4	0.636
24 David Limer	5-3	0.625
25 Greg Conaway	6-4	0.600
Steve Witz	6-4	0.600
Galen Johnson	6-4	0.600
28 Randy Wilcox	7-5	0.583
Peter Hoffmann	7-5	0.583
30 Danny Buckles	4-3	0.571
Anthony Jones	4-3	0.571
32 Pat Barrett	5-4	0.556
Deanna Marx	5-4	0.556
Tom Thompson	5-4	0.556
35 James Mathewson III	6-5	0.546
36 Ed Chase	7-6	0.539
Keaton Mann	7-6	0.539
38 John Riner	6-6	0.500
Chris Smith	5-5	0.500
James Sutton	5-5	0.500
Paul Jacobi	5-5	0.500
Ed Grubb	4-4	0.500
Jason Kelly	4-4	0.500
Peggy Jackson	4-4	0.500
John Willman	4-4	0.500
Todd Lewis	4-4	0.500
Christopher Mori	3-3	0.500
Greg Allen	3-3	0.500
Mike Litzsinger	3-3	0.500
50 Fon Denton	6-7	0.462
Mike Burton	6-7	0.462
Hugh Findlay	6-7	0.462
53 Tommy Meeks	5-6	0.455
Lars Sauls	5-6	0.455
55 Kyle Mills	4-5	0.444
Dave Oholendt	4-5	0.444
Doug Jeffcoat	4-5	0.444
Jason Kilts	4-5	0.444
John Riddle	4-5	0.444
60 Larry Wetterer	3-4	0.429
61 Sean O'Brien	5-7	0.417
62 Mark Boudreaux	5-8	0.385
63 Neal Harrington	3-5	0.375
Jon Tofte	3-5	0.375
Rob Radcliff	3-5	0.375
Eddie Jackson	3-5	0.375
67 Andrew Stahl	4-7	0.364
68 Brett Leyburn	4-8	0.333
Travis Croom	3-6	0.333
Tom Redick	3-6	0.333
Paula Brown	3-6	0.333
Reggie Edwards	2-4	0.333
73 Nat Hammer	3-7	0.300
Don Richards	3-7	0.300
75 Tom Flood	2-5	0.286
76 Gage Vogele	2-6	0.250
Wil James	2-6	0.250
Jimi Brooks	2-6	0.250
Priscilla Mills	2-6	0.250
80 Mike Dwight	2-10	0.167
Cyndi Chase	1-5	0.167
82 Marian Kirk	1-6	0.143
83 Bob Ziemendorf	1-7	0.125
Pete Hall	1-7	0.125
85 Ashleigh Varn	1-8	0.111
86 Joyce Owens	0-9	0.000
<b>ARROWS Division Singles</b>		
1Tom Brown	11-3	0.786
2Mark Knight	7-2	0.778

3PJ Sullivan	9-3	0.750
Dave Annas	6-2	0.750
5Wil Tan	5-2	0.714
Dale Hyler	5-2	0.714
7John Strobel	7-4	0.636
8Steve Witz	6-4	0.600
9Danny Buckles	4-3	0.571
10 Tom Thompson	5-4	0.556
11 James Mathewson III	6-5	0.546
12 Ed Chase	7-6	0.539
13 Paul Jacobi	5-5	0.500
John Willman	4-4	0.500
15 Lars Sauls	5-6	0.455
16 Dave Oholendt	4-5	0.444
Jason Kilts	4-5	0.444
18 Brett Leyburn	4-8	0.333
19 Gage Vogele	2-6	0.250
20 Bob Ziemendorf	1-7	0.125

#### APPLES Division Singles

1Mike Seward	6-0	1.000
2Michael Lovelace	8-2	0.800
3Dennis Keever	8-4	0.667
Sal Reitano	4-2	0.667
Jim Hunsberger	4-2	0.667
6Galen Johnson	6-4	0.600
7Randy Wilcox	7-5	0.583
8Deanna Marx	5-4	0.556
9John Riner	6-6	0.500
Ed Grubb	4-4	0.500
Christopher Mori	3-3	0.500
12 Doug Jeffcoat	4-5	0.444
13 Sean O'Brien	5-7	0.417
14 Mark Boudreaux	5-8	0.385
15 Rob Radcliff	3-5	0.375
Eddie Jackson	3-5	0.375
17 Tom Redick	3-6	0.333
18 Don Richards	3-7	0.300
19 Tom Flood	2-5	0.286
20 Priscilla Mills	2-6	0.250
21 Mike Dwight	2-10	0.167
22 Pete Hall	1-7	0.125

#### BIRDS Division Singles

1Don Moore	11-2	0.846
2Mike Reynolds	7-2	0.778
3Ed Bahor	10-3	0.769
4Kenny Johnson	8-3	0.727
5Adom Lubitz	8-4	0.667
6Robby Crownover	7-4	0.636
7David Limer	5-3	0.625
8Peter Hoffmann	7-5	0.583
9Keaton Mann	7-6	0.539
10 Mike Burton	6-7	0.462
Hugh Findlay	6-7	0.462
12 Tommy Meeks	5-6	0.455
13 Kyle Mills	4-5	0.444
John Riddle	4-5	0.444
15 Jon Tofte	3-5	0.375
16 Andrew Stahl	4-7	0.364
17 Reggie Edwards	2-4	0.333
18 Nat Hammer	3-7	0.300
19 Wil James	2-6	0.250

Jimi Brooks	2-6	0.250
<b>BEES Division Singles</b>		
1Jerry Shengulette	10-1	0.909
2Donald Grubb	9-1	0.900
3Carl McMillon	8-2	0.800
4Joey Barber	6-2	0.750
5Cee Jay Dozar	7-3	0.700
6Greg Conaway	6-4	0.600
7Anthony Jones	4-3	0.571
8Pat Barrett	5-4	0.556
9Chris Smith	5-5	0.500
James Sutton	5-5	0.500
Todd Lewis	4-4	0.500
Jason Kelly	4-4	0.500
Peggy Jackson	4-4	0.500
Mike Litzsinger	3-3	0.500
Greg Allen	3-3	0.500
16 Fon Denton	6-7	0.462
17 Larry Wetterer	3-4	0.429
18 Neal Harrington	3-5	0.375
19 Travis Croom	3-6	0.333
Paula Brown	3-6	0.333
21 Cyndi Chase	1-5	0.167
22 Marian Kirk	1-6	0.143
23 Ashleigh Varn	1-8	0.111
24 Joyce Owens	0-9	0.000

#### Doubles

#### Overall Doubles

1Paul Jacobi	10-0	1.000
Wil Tan	6-0	1.000
3Dale Hyler	8-1	0.889
4Matt Varnadoe	5-1	0.833
Jerry Shengulette	5-1	0.833
Danny Buckles	5-1	0.833
7Mike Reynolds	8-2	0.800
8Marian Kirk	10-3	0.769
9Steve Witz	6-2	0.750
John Willman	6-2	0.750
Jim Hunsberger	6-2	0.750
12 Doug Jeffcoat	5-2	0.714
13 Keaton Mann	8-4	0.667
Nat Hammer	6-3	0.667
Dave Annas	6-3	0.667
Tom Redick	6-3	0.667
John Riddle	6-3	0.667
Joey Barber	6-3	0.667
Ed Grubb	6-3	0.667
David Limer	4-2	0.667
Mike Seward	4-2	0.667
22 Don Moore	9-5	0.643
23 Ed Bahor	7-4	0.636
Mark Knight	7-4	0.636
Andrew Stahl	7-4	0.636
26 Peter Hoffmann	8-5	0.615
Kyle Mills	8-5	0.615
28 James Sutton	6-4	0.600
Tom Brown	6-4	0.600
30 John Strobel	7-5	0.583
Wil James	7-5	0.583
32 Carl McMillon	8-6	0.571

Dominic Mussatti	4-3	0.571
34 Hugh Findlay	5-4	0.556
35 Dennis Keever	6-5	0.546
36 Ed Chase	7-6	0.539
Adom Lubitz	7-6	0.539
38 James Mathewson III	6-6	0.500
Peggy Jackson	6-6	0.500
Robby Crownover	6-6	0.500
Michael Lovelace	5-5	0.500
Jason Kilts	5-5	0.500
Mike Litzsinger	5-5	0.500
Paula Brown	4-4	0.500
Travis Croom	4-4	0.500
Jon Tofte	4-4	0.500
Pat Barrett	3-3	0.500
48 Kenny Johnson	6-7	0.462
John Riner	6-7	0.462
50 Galen Johnson	5-6	0.455
Deanna Marx	5-6	0.455
52 Joyce Owens	4-5	0.444
Jason Kelly	4-5	0.444
54 PJ Sullivan	6-8	0.429
Randy Wilcox	6-8	0.429
Larry Wetterer	3-4	0.429
Bob Ziemendorf	3-4	0.429
58 Neal Harrington	4-6	0.400
Donald Grubb	4-6	0.400
60 Mark Boudreaux	5-8	0.385
61 Ashleigh Varn	3-5	0.375
Tommy Meeks	3-5	0.375
63 Chris Smith	4-7	0.364
Don Richards	4-7	0.364
Mike Burton	4-7	0.364
66 Fon Denton	4-8	0.333
Jimi Brooks	3-6	0.333
Christopher Mori	3-6	0.333
Sean O'Brien	3-6	0.333
Eddie Jackson	3-6	0.333
Tom Thompson	3-6	0.333
Pete Hall	2-4	0.333
Gage Vogele	2-4	0.333
74 Rob Radcliff	3-7	0.300
75 Sal Reitano	2-5	0.286
Anthony Jones	2-5	0.286
Cee Jay Dozar	2-5	0.286
78 Brett Leyburn	3-9	0.250
Lars Sauls	3-9	0.250
Mike Dwight	2-6	0.250
Priscilla Mills	2-6	0.250
82 Dave Oholendt	2-8	0.200
83 Greg Conaway	1-5	0.167
84 Todd Lewis	1-10	0.091

#### ARROWS Division Doubles

1Paul Jacobi	10-0	1.000
Wil Tan	6-0	1.000
3Dale Hyler	8-1	0.889
4Danny Buckles	5-1	0.833
Matt Varnadoe	5-1	0.833
6Steve Witz	6-2	0.750
John Willman	6-2	0.750
8Dave Annas	6-3	0.667

9Mark Knight	7-4	0.636
10 Tom Brown	6-4	0.600
11 John Strobel	7-5	0.583
12 Ed Chase	7-6	0.539
13 James Mathewson III	6-6	0.500
Jason Kilts	5-5	0.500
15 PJ Sullivan	6-8	0.429
Bob Ziemendorf	3-4	0.429
17 Tom Thompson	3-6	0.333
Gage Vogele	2-4	0.333
19 Brett Leyburn	3-9	0.250
Lars Sauls	3-9	0.250
21 Dave Oholendt	2-8	0.200

#### APPLES Division Doubles

1Jim Hunsberger	6-2	0.750
2Doug Jeffcoat	5-2	0.714
3Ed Grubb	6-3	0.667
Tom Redick	6-3	0.667
Mike Seward	4-2	0.667
6Dennis Keever	6-5	0.546
7Michael Lovelace	5-5	0.500
8John Riner	6-7	0.462
9Deanna Marx	5-6	0.455
Galen Johnson	5-6	0.455
11 Randy Wilcox	6-8	0.429
12 Mark Boudreaux	5-8	0.385
13 Don Richards	4-7	0.364
14 Sean O'Brien	3-6	0.333
Eddie Jackson	3-6	0.333
Christopher Mori	3-6	0.333
Pete Hall	2-4	0.333
18 Rob Radcliff	3-7	0.300
19 Sal Reitano	2-5	0.286
20 Mike Dwight	2-6	0.250
Priscilla Mills	2-6	0.250

#### BIRDS Division Doubles

1Mike Reynolds	8-2	0.800
2Keaton Mann	8-4	0.667
John Riddle	6-3	0.667
Nat Hammer	6-3	0.667
David Limer	4-2	0.667
6Don Moore	9-5	0.643
7Ed Bahor	7-4	0.636
Andrew Stahl	7-4	0.636
9Peter Hoffmann	8-5	0.615
Kyle Mills	8-5	0.615
11 Wil James	7-5	0.583
12 Dominic Mussatti	4-3	0.571
13 Hugh Findlay	5-4	0.556
14 Adom Lubitz	7-6	0.539
15 Robby Crownover	6-6	0.500
Jon Tofte	4-4	0.500
17 Kenny Johnson	6-7	0.462
18 Tommy Meeks	3-5	0.375
19 Mike Burton	4-7	0.364
20 Jimi Brooks	3-6	0.333

#### BEES Division Doubles

1Jerry Shengulette	5-1	0.833
2Marian Kirk	10-3	0.769
3Joey Barber	6-3	0.667
4James Sutton	6-4	0.600

5Carl McMillon	8-6	0.571
6Peggy Jackson	6-6	0.500
Mike Litzsinger	5-5	0.500
Paula Brown	4-4	0.500
Travis Croom	4-4	0.500
Pat Barrett	3-3	0.500
11 Joyce Owens	4-5	0.444
Jason Kelly	4-5	0.444
13 Larry Wetterer	3-4	0.429
14 Neal Harrington	4-6	0.400
Donald Grubb	4-6	0.400
16 Ashleigh Varn	3-5	0.375
17 Chris Smith	4-7	0.364
18 Fon Denton	4-8	0.333
19 Anthony Jones	2-5	0.286
Cee Jay Dozar	2-5	0.286
21 Greg Conaway	1-5	0.167
22 Todd Lewis	1-10	0.091

### ASP

#### Overall ASP's

1Mike Seward	32	15	2.133
2Wil Tan	31.5	17	1.853
3Tom Brown	47	28	1.679
4Mark Knight	41.5	25	1.660
5Tom Redick	32.5	23	1.413
6Dave Annas	31	22	1.409
7Dennis Keever	33.5	26	1.288
8Doug Jeffcoat	27.5	22	1.250
9John Riner	37.5	32	1.172
10 Jason Kilts	26.5	23	1.152
11 Dale Hyler	24	21	1.143
12 Jerry Shengulette	25	22	1.136
13 Mike Litzsinger	19	20	0.950
14 Michael Lovelace	23.5	25	0.940
15 Mike Reynolds	18.5	22	0.841
16 Tom Thompson	18.5	23	0.804
17 Ed Grubb	16	20	0.800
18 Joey Barber	16.5	21	0.786
19 Danny Buckles	13	17	0.765
20 PJ Sullivan	25	33	0.758
21 Ed Chase	24	32	0.750
Paul Jacobi	19.5	26	0.750
23 Ed Bahor	22	30	0.733
24 Sal Reitano	13	18	0.722
25 Adom Lubitz	22	31	0.710
26 Todd Lewis	14.5	22	0.659
27 Don Moore	20.5	33	0.621
28 Chris Smith	16	26	0.615
29 Sean O'Brien	16.5	27	0.611
30 John Strobel	17	29	0.586
31 Hugh Findlay	16.5	29	0.569
32 Steve Witz	12.5	22	0.568
33 James Sutton	13.5	24	0.563
34 Peter Hoffmann	16.5	30	0.550
35 Wil James	13.5	25	0.540
Donald Grubb	13.5	25	0.540
37 Galen Johnson	11	21	0.524
38 Mike Dwight	13	25	0.520
39 Cee Jay Dozar	9.5	19	0.500
Christopher Mori	9.5	19	0.500

41 Mark Boudreaux	15	32	0.469
42 James Mathewson III	11	28	0.429
43 John Willman	8.5	20	0.425
44 Jim Hunsberger	7.5	18	0.417
45 Bob Ziemendorf	7.5	19	0.395
46 Randy Wilcox	12.5	32	0.391
47 Kyle Mills	10.5	29	0.362
48 Larry Wetterer	6.5	18	0.361
Pat Barrett	6.5	18	0.361
50 Andrew Stahl	9.5	27	0.352
51 Lars Sauls	9.5	29	0.328
52 Gage Vogele	5.5	17	0.324
53 Mike Burton	9.5	30	0.317
54 Nat Hammer	7.5	25	0.300
55 Carl McMillon	8.5	31	0.274
56 Brett Leyburn	8	30	0.267
57 Fon Denton	8.5	32	0.266
58 Paula Brown	5.5	21	0.262
59 Dave Oholendt	6	23	0.261
Rob Radcliff	6	23	0.261
61 Keaton Mann	8	31	0.258
62 Greg Conaway	4.5	19	0.237
Pete Hall	4.5	19	0.237
64 Jon Tofte	4	17	0.235
65 Deanna Marx	5.5	24	0.229
66 John Riddle	5	22	0.227
67 Jimi Brooks	4.5	22	0.205
68 Eddie Jackson	4.5	23	0.196
69 Kenny Johnson	6	31	0.194
70 Joyce Owens	3.5	23	0.152
Tommy Meeks	3.5	23	0.152
72 David Limer	3	20	0.150
73 Jason Kelly	3	22	0.136
Neal Harrington	3	22	0.136
75 Robby Crownover	4	30	0.133
76 Marian Kirk	3.5	27	0.130
77 Don Richards	3	24	0.125
Anthony Jones	2.5	20	0.125
79 Ashleigh Varn	2	23	0.087
80 Priscilla Mills	1.5	21	0.071

#### ARROWS Division ASP's

1Wil Tan	31.5	17	1.853
2Tom Brown	47	28	1.679
3Mark Knight	41.5	25	1.660
4Dave Annas	31	22	1.409
5Jason Kilts	26.5	23	1.152
6Dale Hyler	24	21	1.143
7Tom Thompson	18.5	23	0.804
8Danny Buckles	13	17	0.765
9PJ Sullivan	25	33	0.758
10 Ed Chase	24	32	0.750
Paul Jacobi	19.5	26	0.750
12 John Strobel	17	29	0.586
13 Steve Witz	12.5	22	0.568
14 James Mathewson III	11	28	0.429
15 John Willman	8.5	20	0.425
16 Bob Ziemendorf	7.5	19	0.395
17 Lars Sauls	9.5	29	0.328
18 Gage Vogele	5.5	17	0.324
19 Brett Leyburn	8	30	0.267
20 Dave Oholendt	6	23	0.261

**APPLES Division ASP's**

1Mike Seward	32	15	2.133
2Tom Redick	32.5	23	1.413
3Dennis Keever	33.5	26	1.288
4Doug Jeffcoat	27.5	22	1.250
5John Riner	37.5	32	1.172
6Michael Lovelace	23.5	25	0.940
7Ed Grubb	16	20	0.800
8Sal Reitano	13	18	0.722
9Sean O'Brien	16.5	27	0.611
10 Galen Johnson	11	21	0.524
11 Mike Dwight	13	25	0.520
12 Christopher Mori	9.5	19	0.500
13 Mark Boudreaux	15	32	0.469
14 Jim Hunsberger	7.5	18	0.417
15 Randy Wilcox	12.5	32	0.391
16 Rob Radcliff	6	23	0.261
17 Pete Hall	4.5	19	0.237
18 Deanna Marx	5.5	24	0.229
19 Eddie Jackson	4.5	23	0.196
20 Don Richards	3	24	0.125
21 Priscilla Mills	1.5	21	0.071

**BIRDS Division ASP's**

1Mike Reynolds	18.5	22	0.841
2Ed Bahor	22	30	0.733
3Adom Lubitz	22	31	0.710
4Don Moore	20.5	33	0.621
5Hugh Findlay	16.5	29	0.569
6Peter Hoffmann	16.5	30	0.550
7Wil James	13.5	25	0.540
8Kyle Mills	10.5	29	0.362
9Andrew Stahl	9.5	27	0.352
10 Mike Burton	9.5	30	0.317
11 Nat Hammer	7.5	25	0.300
12 Keaton Mann	8	31	0.258
13 Jon Tofte	4	17	0.235
14 John Riddle	5	22	0.227
15 Jimi Brooks	4.5	22	0.205
16 Kenny Johnson	6	31	0.194
17 Tommy Meeks	3.5	23	0.152
18 David Limer	3	20	0.150
19 Robby Crownover	4	30	0.133

**BEES Division ASP's**

1Jerry Shengulette	25	22	1.136
2Mike Litzsinger	19	20	0.950
3Joey Barber	16.5	21	0.786
4Todd Lewis	14.5	22	0.659
5Chris Smith	16	26	0.615
6James Sutton	13.5	24	0.563
7Donald Grubb	13.5	25	0.540
8Cee Jay Dozar	9.5	19	0.500
9Pat Barrett	6.5	18	0.361
Larry Wetterer	6.5	18	0.361
11 Carl McMillon	8.5	31	0.274
12 Fon Denton	8.5	32	0.266
13 Paula Brown	5.5	21	0.262
14 Greg Conaway	4.5	19	0.237
15 Joyce Owens	3.5	23	0.152
16 Jason Kelly	3	22	0.136
Neal Harrington	3	22	0.136
18 Marian Kirk	3.5	27	0.130

19 Anthony Jones	2.5	20	0.125
20 Ashleigh Varn	2	23	0.087

**HCP****Overall Handicaps**

1Mike Seward	25.29
2Mark Knight	21.75
3Wil Tan	21.23
4Tom Brown	20.63
5Tom Redick	20.51
6Dave Annas	20.23
7Jim Hunsberger	18.84
8Dale Hyler	18.12
9John Riner	17.62
10 Jason Kilts	17.53
11 Doug Jeffcoat	17.35
12 Dennis Keever	17.28
13 Mike Reynolds	16.86
14 David Page	16.03
15 Joey Barber	15.88
16 Michael Lovelace	15.71
17 Ed Grubb	15.69
18 Sal Reitano	15.58
19 Adom Lubitz	15.52
20 John Poteat	15.45
21 Lars Sauls	15.38
22 Jerry Shengulette	15.20
23 Steve Witz	15.16
24 Mike Litzsinger	15.16
25 PJ Sullivan	15.09
26 John Strobel	14.98
27 John Willman	14.94
28 Paul Jacobi	14.90
29 Sean O'Brien	14.75
30 Ed Bahor	14.60
31 Rob Radcliff	14.34
32 Kevin Staring	14.33
33 Matt Varnadoe	14.23
34 Don Moore	14.23
35 Donald Grubb	14.20
36 Gage Vogeles	14.13
37 Tom Thompson	13.98
38 Randy Wilcox	13.82
39 Tom Flood	13.78
40 Ed Chase	13.72
41 Galen Johnson	13.71
42 Danny Buckles	13.68
43 Greg Conaway	13.49
44 Chris Smith	13.42
45 Wil James	13.33
46 Peter Hoffmann	13.28
47 Christopher Mori	13.27
48 Brett Leyburn	13.04
49 Mark Boudreaux	13.03
50 Mike Dwight	12.91
51 Dominic Mussatti	12.68
52 Todd Lewis	12.50
53 Bob Grayckowski	12.29
54 Kenny Johnson	12.04
55 Tony Aichele	11.83
56 Joe McCartney	11.80

57 Mike Burton	11.69
58 James Mathewson III	11.67
59 Greg Allen	11.63
60 Pete Hall	11.52
61 John Riddle	11.38
62 Hugh Findlay	11.35
63 Keaton Mann	11.27
64 J.J. Gleim	11.22
65 Larry Wetterer	11.18
66 Jason Kelly	11.17
67 Tommy Meeks	11.06
68 Eddie Jackson	10.91
69 Nat Hammer	10.87
70 Hammer Ammerman	10.76
71 Cee Jay Dozar	10.75
72 Bob Ziemendorf	10.61
73 Justin Griffith	10.53
74 Paula Brown	10.46
75 Pat Barrett	10.43
76 James Sutton	10.42
77 Andrew Stahl	10.18
78 Carl McMillon	9.99
79 Dave Oholendt	9.99
80 Robby Crownover	9.97
81 Corey O'Malley	9.94
82 Fon Denton	9.78
83 Julie Wilcox	9.74
84 Jon Tofte	9.73
85 Kyle Mills	9.70
86 David Limer	9.65
87 Deanna Marx	9.54
88 Ronnie Coutu	9.53
89 Reggie Edwards	9.50
90 Matt Rowland	9.46
91 Anthony Jones	9.29
92 Jimi Brooks	9.27
93 Travis Croom	9.13
94 Cyndi Chase	9.07
95 Willie Phillips	8.71
96 Priscilla Mills	8.58
97 Marian Kirk	8.38
98 Neal Harrington	8.36
99 Barbara Garmon	8.03
100Don Richards	7.96
101Peggy Jackson	7.94
102Joyce Owens	7.71
103Ashleigh Varn	7.16

**SPPD****Overall Season Points Per Dart**

1Mike Seward	25.285
2Mark Knight	20.300
3Tom Brown	20.258
4Wil Tan	19.857
5Dale Hyler	19.641
6Dave Annas	19.450
7Jim Hunsberger	18.840
8Tom Redick	17.989
9Dennis Keever	17.712
10 Ed Grubb	17.503
11 Jason Kilts	17.174

12 John Riner	17.147
13 Mike Reynolds	16.860
14 Doug Jeffcoat	16.317
15 Sal Reitano	15.575
16 Michael Lovelace	15.533
17 Steve Witz	15.201
18 Don Moore	15.027
19 Ed Bahor	14.975
20 Jerry Shengulette	14.928
21 Joey Barber	14.408
22 Ed Chase	14.291
23 John Willman	14.279
24 Sean O'Brien	14.272
25 John Strobel	14.232
26 Galen Johnson	14.213
27 Lars Sauls	14.178
28 Mike Litzsinger	14.172
29 Adom Lubitz	14.138
30 Donald Grubb	14.029
31 Tom Flood	13.783
32 PJ Sullivan	13.749
33 Randy Wilcox	13.720
34 Paul Jacobi	13.550
35 Tom Thompson	13.455
36 Gage Vogele	13.328
37 Mike Dwight	13.037
38 Danny Buckles	12.944
39 Chris Smith	12.860
40 Rob Radcliff	12.820
41 Peter Hoffmann	12.779
42 Brett Leyburn	12.740
43 Todd Lewis	12.643
44 Pete Hall	12.626
45 Wil James	12.612
46 Greg Conaway	12.215
47 Mark Boudreaux	12.132
48 Christopher Mori	11.990
49 Jason Kelly	11.528
50 Keaton Mann	11.496
Mike Burton	11.496
52 Cee Jay Dozar	11.369
53 Hugh Findlay	11.214
54 Larry Wetterer	11.177
55 Tommy Meeks	11.172
56 Kenny Johnson	11.162
57 James Mathewson III	10.879
58 John Riddle	10.719
59 Bob Ziemendorf	10.657
60 Marian Kirk	10.489
61 David Limer	10.468
62 Pat Barrett	10.432
63 Greg Allen	10.385
64 Jimi Brooks	10.349
65 Robby Crownover	9.947
66 Dave Oholendt	9.928
67 Eddie Jackson	9.897
68 James Sutton	9.873
69 Fon Denton	9.692
70 Reggie Edwards	9.517
71 Carl McMillon	9.486
72 Nat Hammer	9.480

73 Priscilla Mills	9.368
74 Cyndi Chase	9.225
75 Anthony Jones	9.106
76 Andrew Stahl	9.010
77 Kyle Mills	8.927
78 Jon Tofte	8.676
79 Deanna Marx	8.595
80 Travis Croom	8.590
81 Don Richards	8.465
82 Joyce Owens	8.420
83 Peggy Jackson	8.010
84 Ashleigh Varn	7.579
85 Paula Brown	7.529
86 Neal Harrington	7.123

#### ARROWS Season Points Per Dart

1Mark Knight	20.300
2Tom Brown	20.258
3Wil Tan	19.857
4Dale Hyler	19.641
5Dave Annas	19.450
6Jason Kilts	17.174
7Steve Witz	15.201
8Ed Chase	14.291
9John Willman	14.279
10 John Strobel	14.232
11 Lars Sauls	14.178
12 PJ Sullivan	13.749
13 Paul Jacobi	13.550
14 Tom Thompson	13.455
15 Gage Vogele	13.328
16 Danny Buckles	12.944
17 Brett Leyburn	12.740
18 James Mathewson III	10.879
19 Bob Ziemendorf	10.657
20 Dave Oholendt	9.928

#### APPLES Season Points Per Dart

1Mike Seward	25.285
2Jim Hunsberger	18.840
3Tom Redick	17.989
4Dennis Keever	17.712
5Ed Grubb	17.503
6John Riner	17.147
7Doug Jeffcoat	16.317
8Sal Reitano	15.575
9Michael Lovelace	15.533
10 Sean O'Brien	14.272
11 Galen Johnson	14.213
12 Tom Flood	13.783
13 Randy Wilcox	13.720
14 Mike Dwight	13.037
15 Rob Radcliff	12.820
16 Pete Hall	12.626
17 Mark Boudreaux	12.132
18 Christopher Mori	11.990
19 Eddie Jackson	9.897
20 Priscilla Mills	9.368
21 Deanna Marx	8.595
22 Don Richards	8.465

#### BIRDS Season Points Per Dart

1Mike Reynolds	16.860
2Don Moore	15.027

3Ed Bahor	14.975
4Adom Lubitz	14.138
5Peter Hoffmann	12.779
6Wil James	12.612
7Keaton Mann	11.496
Mike Burton	11.496
9Hugh Findlay	11.214
10 Tommy Meeks	11.172
11 Kenny Johnson	11.162
12 John Riddle	10.719
13 David Limer	10.468
14 Jimi Brooks	10.349
15 Robby Crownover	9.947
16 Reggie Edwards	9.517
17 Nat Hammer	9.480
18 Andrew Stahl	9.010
19 Kyle Mills	8.927
20 Jon Tofte	8.676

#### BEES Season Points Per Dart

1Jerry Shengulette	14.928
2Joey Barber	14.408
3Mike Litzsinger	14.172
4Donald Grubb	14.029
5Chris Smith	12.860
6Todd Lewis	12.643
7Greg Conaway	12.215
8Jason Kelly	11.528
9Cee Jay Dozar	11.369
10 Larry Wetterer	11.177
11 Marian Kirk	10.489
12 Pat Barrett	10.432
13 Greg Allen	10.385
14 James Sutton	9.873
15 Fon Denton	9.692
16 Carl McMillon	9.486
17 Cyndi Chase	9.225
18 Anthony Jones	9.106
19 Travis Croom	8.590
20 Joyce Owens	8.420
21 Peggy Jackson	8.010
22 Ashleigh Varn	7.579
23 Paula Brown	7.529
24 Neal Harrington	7.123

#### Womens Season Points Per Dart

1Marian Kirk	10.489
2Priscilla Mills	9.368
3Cyndi Chase	9.225
4Deanna Marx	8.595
5Joyce Owens	8.420
6Peggy Jackson	8.010
7Ashleigh Varn	7.579
8Paula Brown	7.529

### OVERALL

#### Overall

1Jerry Shengulette	19-3	0.864
2Mike Seward	12-3	0.800
3Jim Hunsberger	14-4	0.778
4Mike Reynolds	17-5	0.773
5Wil Tan	13-4	0.765
6Mark Knight	19-6	0.760

7Dale Hyler	15-6	0.714
8Ed Bahor	21-9	0.700
9Don Moore	23-10	0.697
10 Paul Jacobi	18-8	0.692
11 Tom Brown	19-9	0.679
12 Carl McMillon	21-10	0.677
13 Joey Barber	14-7	0.667
14 John Willman	13-7	0.650
15 Danny Buckles	11-6	0.647
16 Michael Lovelace	16-9	0.640
17 Dave Annas	14-8	0.636
Steve Witz	14-8	0.636
19 James Sutton	15-9	0.625
20 Dennis Keever	16-10	0.615
21 Keaton Mann	19-12	0.613
22 Peggy Jackson	15-10	0.600
David Limer	12-8	0.600
Ed Grubb	12-8	0.600
25 Marian Kirk	16-11	0.593
26 Doug Jeffcoat	13-9	0.591
27 John Strobel	17-12	0.586
28 Kenny Johnson	18-13	0.581
Adom Lubitz	18-13	0.581
30 PJ Sullivan	19-14	0.576
31 Robby Crownover	17-13	0.567
32 Galen Johnson	13-10	0.565
33 Donald Grubb	14-11	0.560
34 Jason Kelly	12-10	0.546
35 Deanna Marx	13-11	0.542
36 Peter Hoffmann	16-14	0.533
37 Ed Chase	17-15	0.531
38 Greg Conaway	10-9	0.526
39 Tom Redick	12-11	0.522
40 Randy Wilcox	17-16	0.515
41 John Riner	16-16	0.500
Mike Litzsinger	10-10	0.500
43 Nat Hammer	12-13	0.480
44 Jason Kilts	11-12	0.478
Tommy Meeks	11-12	0.478
46 Christopher Mori	9-10	0.474
Cee Jay Dozar	9-10	0.474
48 James Mathewson III	13-15	0.464
49 John Riddle	10-12	0.455
50 Travis Croom	9-11	0.450
Anthony Jones	9-11	0.450
52 Kyle Mills	13-16	0.448
53 Andrew Stahl	12-15	0.444
Pat Barrett	8-10	0.444
Sal Reitano	8-10	0.444
Larry Wetterer	8-10	0.444
57 Wil James	11-14	0.440
58 Mike Burton	13-17	0.433
59 Paula Brown	9-12	0.429
60 Hugh Findlay	12-17	0.414
61 Jon Tofte	7-10	0.412
62 Neal Harrington	9-13	0.409
63 Sean O'Brien	11-16	0.407
64 Mark Boudreaux	13-19	0.406
65 Tom Thompson	9-14	0.391
Eddie Jackson	9-14	0.391
67 Chris Smith	10-16	0.385

68 Fon Denton	12-20	0.375
Rob Radcliff	9-15	0.375
70 Pete Hall	7-12	0.368
71 Don Richards	9-16	0.360
72 Gage Vogele	6-11	0.353
73 Ashleigh Varn	8-15	0.348
74 Jimi Brooks	7-15	0.318
Todd Lewis	7-15	0.318
Priscilla Mills	7-15	0.318
77 Lars Sauls	9-20	0.310
78 Joyce Owens	7-16	0.304
79 Mike Dwight	7-18	0.280
80 Bob Ziemendorf	5-14	0.263
81 Dave Oholendt	6-17	0.261
82 Brett Leyburn	7-23	0.233

#### ARROWS Division Overall

1Wil Tan	13-4	0.765
2Mark Knight	19-6	0.760
3Dale Hyler	15-6	0.714
4Paul Jacobi	18-8	0.692
5Tom Brown	19-9	0.679
6John Willman	13-7	0.650
7Danny Buckles	11-6	0.647
8Dave Annas	14-8	0.636
Steve Witz	14-8	0.636
10 John Strobel	17-12	0.586
11 PJ Sullivan	19-14	0.576
12 Ed Chase	17-15	0.531
13 Jason Kilts	11-12	0.478
14 James Mathewson III	13-15	0.464
15 Tom Thompson	9-14	0.391
16 Gage Vogele	6-11	0.353
17 Lars Sauls	9-20	0.310
18 Bob Ziemendorf	5-14	0.263
19 Dave Oholendt	6-17	0.261
20 Brett Leyburn	7-23	0.233

#### APPLES Division Overall

1Mike Seward	12-3	0.800
2Jim Hunsberger	14-4	0.778
3Michael Lovelace	16-9	0.640
4Dennis Keever	16-10	0.615
5Ed Grubb	12-8	0.600
6Doug Jeffcoat	13-9	0.591
7Galen Johnson	13-10	0.565
8Deanna Marx	13-11	0.542
9Tom Redick	12-11	0.522
10 Randy Wilcox	17-16	0.515
11 John Riner	16-16	0.500
12 Christopher Mori	9-10	0.474
13 Sal Reitano	8-10	0.444
14 Sean O'Brien	11-16	0.407
15 Mark Boudreaux	13-19	0.406
16 Eddie Jackson	9-14	0.391
17 Rob Radcliff	9-15	0.375
18 Pete Hall	7-12	0.368
19 Don Richards	9-16	0.360
20 Priscilla Mills	7-15	0.318
21 Mike Dwight	7-18	0.280

#### BIRDS Division Overall

1Mike Reynolds	17-5	0.773
2Ed Bahor	21-9	0.700

3Don Moore	23-10	0.697
4Keaton Mann	19-12	0.613
5David Limer	12-8	0.600
6Kenny Johnson	18-13	0.581
Adom Lubitz	18-13	0.581
8Robby Crownover	17-13	0.567
9Peter Hoffmann	16-14	0.533
10 Nat Hammer	12-13	0.480
11 Tommy Meeks	11-12	0.478
12 John Riddle	10-12	0.455
13 Kyle Mills	13-16	0.448
14 Andrew Stahl	12-15	0.444
15 Wil James	11-14	0.440
16 Mike Burton	13-17	0.433
17 Hugh Findlay	12-17	0.414
18 Jon Tofte	7-10	0.412
19 Jimi Brooks	7-15	0.318

#### BEES Division Overall

1Jerry Shengulette	19-3	0.864
2Carl McMillon	21-10	0.677
3Joey Barber	14-7	0.667
4James Sutton	15-9	0.625
5Peggy Jackson	15-10	0.600
6Marian Kirk	16-11	0.593
7Donald Grubb	14-11	0.560
8Jason Kelly	12-10	0.546
9Greg Conaway	10-9	0.526
10 Mike Litzsinger	10-10	0.500
11 Cee Jay Dozar	9-10	0.474
12 Travis Croom	9-11	0.450
Anthony Jones	9-11	0.450
14 Pat Barrett	8-10	0.444
Larry Wetterer	8-10	0.444
16 Paula Brown	9-12	0.429
17 Neal Harrington	9-13	0.409
18 Chris Smith	10-16	0.385
19 Fon Denton	12-20	0.375
20 Ashleigh Varn	8-15	0.348
21 Todd Lewis	7-15	0.318
22 Joyce Owens	7-16	0.304

## Match Results 6/20

Chapel Heel Boyz 7

The Grinnin' Gorillas 12

ASP's: Chapel Heel Boyz

James Mathewson III - t 5m

Matt Varnadoe - 3b t13 5M

Dave Annas - t21 6m 5m 7m 5m t

ASP's: The Grinnin' Gorillas

Tom Brown - t 5m 5m 5m

Mark Knight - t40 t t23 5m t 7m

Wil Tan - t40 t 5m t t25 5b

Paul Jacobi - 3b

Team 301 Crk 601 Dck 801 Tot

Chapel Heel Boyz 2 1 2 2 0 7

The Grinnin' Gorillas 2 3 2 2 3 12

Match Dart: Mark Knight

Puppies 11

Dee Dee Dee 8

ASP's: Puppies

Doug Jeffcoat - t40 t27 t t21 5m 5m 3b

Bob Grayckowski - 5m 5m t33 5m

Ed Grubb - t t t40 5m 6m

Jim Hunsberger - 5m 5m 5m

ASP's: Dee Dee Dee

Sean O'Brien - 5m 5m 7m

John Riner - 9m 5m 3b 3b

Mark Boudreaux - t12o 5m 3b

Team 301 Crk 601 Dck 801 Tot

Puppies 3 1 2 2 3 11

Dee Dee Dee 1 3 2 2 0 8

Match Dart: None Reported

Whatever 9

Team America 10

ASP's: Whatever

Dennis Keever - t23 t40 5m 5m 5m 5m

Don Richards - t14

Mike Dwight - 5m

Eddie Jackson - 3b

ASP's: Team America

Julie Wilcox - 3b 3b 3b

Randy Wilcox - 5m

Galen Johnson - 5m

Rob Radcliff - t

Sal Reitano - 5m 3bo

Team 301 Crk 601 Dck 801 Tot

Whatever 1 1 4 0 3 9

Team America 3 3 0 4 0 10

Match Dart: Rob Radcliff

In Through the Out Door 12

Strokin 7

ASP's: In Through the Out Door

Kyle Mills - t t40

Hugh Findlay - t t

Peter Hoffmann - 5m

John Riddle - t t

Andrew Stahl - 5m 5m

ASP's: Strokin

Cee Jay Dozar - 5m 5m

Carl McMillon - t03 5m

Team 301 Crk 601 Dck 801 Tot

In Through the Out Door 2 2 4 4 0 12

Strokin 2 2 0 0 3 7

Match Dart: Hugh Findlay

Armed & Hammered 11

The Crackheads 8

ASP's: Armed & Hammered

Kenny Johnson - 5m

Keaton Mann - t20 t

Mike Burton - 5m

ASP's: The Crackheads

Paula Brown - 6m

Donald Grubb - 6m t

Chris Smith - 6m

Team 301 Crk 601 Dck 801 Tot

Armed & Hammered 1 3 2 2 3 11

The Crackheads 3 1 2 2 0 8

Match Dart: None Reported

W.T.F.A.Y.L.A. 14

Poke 'N Hope 5

ASP's: W.T.F.A.Y.L.A.

John Strobel - t

Ed Chase - 3b 5m 3b

Gage Vogeale - t01

PJ Sullivan - 5m 5m 5m

ASP's: Poke 'N Hope

Tony Aichele - t 6m

Brett Leyburn - t30

Lars Sauls - 5m t

Dave Oholendt - t21

Team 301 Crk 601 Dck 801 Tot

W.T.F.A.Y.L.A. 1 4 2 4 3 14

Poke 'N Hope 3 0 2 0 0 5

Match Dart: PJ Sullivan

Shoot to Thrill 6

Evilution 13

ASP's: Shoot to Thrill

Todd Lewis - 3bo t t25

Jason Kelly - t 5m

Ronnie Coutu - 3b

ASP's: Evilution

Adom Lubitz - t40 7m 3b

David Limer - t01

Jon Tofte - 5m

Team 301 Crk 601 Dck 801 Tot

Shoot to Thrill 1 2 0 0 3 6

Evilution 3 2 4 4 0 13

Match Dart: Jimi Brooks

Scrabble 6

More Cowbell 13

ASP's: Scrabble

Mike Litzsinger - 7m 3b 5m 3b t11 t

James Sutton - t40 5m

ASP's: More Cowbell

Don Moore - t23 99out 5m 4bo 5m 5m

Ed Bahor - t32 5m 3bo

Mike Reynolds - 5m 7m 6m t t t

Team 301 Crk 601 Dck 801 Tot

Scrabble 2 2 2 0 0 6


More Cowbell 2 2 2 4 3 13

Match Dart: Ed Bahor

Player	Hppd	301	Crk	601	Dcrk	801	Asp	gms	ASP%	Player	Hppd	301	Crk	601	Dcrk	801	Asp	gms	ASP %		
<u>Dee Dee Dee : APPLES Division</u>																					
Sean O'Brien	14.75	2-4	3-3	1-3	2-3	3-3	16.5	27	0.611	Joe McCartney	11.80	1-0	1-0	1-0	0-0	0-1	2.5	4	0.625		
Deanna Marx	9.54	5-1	0-3	3-3	2-3	3-1	5.5	24	0.229	Barbara Garmon	8.03	1-2	0-2	1-2	1-0	2-0	2.5	11	0.227		
John Riner	17.62	2-3	4-3	4-3	2-4	4-3	37.5	32	1.172	Greg Allen	11.63	3-0	0-3	1-2	0-1	1-1	1.0	12	0.083		
Mark Boudreaux	13.03	2-4	3-4	3-3	2-5	3-3	15.0	32	0.469	Travis Croom	9.13	2-2	1-4	3-1	1-3	2-1	0.0	20	0.000		
Michael Lovelace	15.71	4-1	4-1	1-4	4-1	3-2	23.5	25	0.940	<u>Shoot to Thrill : BEES Division</u>											
<u>Puppies : APPLES Division</u>										Larry Wetterer	11.18	0-3	3-1	2-2	1-2	2-2	6.5	18	0.361		
Mike Seward	25.29	3-0	3-0	2-1	2-1	2-1	32.0	15	2.133	Anthony Jones	9.29	3-3	1-0	2-4	0-1	3-3	2.5	20	0.125		
Doug Jeffcoat	17.35	1-2	3-3	2-1	3-1	4-2	27.5	22	1.250	Todd Lewis	12.50	2-4	2-0	0-6	1-4	2-1	14.5	22	0.659		
Bob Grayckowski	12.29	0-3	2-0	3-0	0-2	1-2	6.5	13	0.500	Matt Rowland	9.46	0-0	1-4	0-0	1-3	1-0	2.0	10	0.200		
Ed Grubb	15.69	2-3	2-1	3-2	3-1	2-1	16.0	20	0.800	Joey Barber	15.88	1-2	5-0	2-1	4-2	2-2	16.5	21	0.786		
David Page	16.03	1-1	2-1	1-1	1-1	0-0	14.0	9	1.556	Jason Kelly	11.17	0-3	4-1	1-2	3-3	4-1	3.0	22	0.136		
Jim Hunsberger	18.84	3-1	1-1	3-1	3-1	4-0	7.5	18	0.417	Pat Barrett	10.43	3-1	2-3	1-2	2-1	0-3	6.5	18	0.361		
Tom Redick	20.51	2-2	1-4	4-0	2-3	3-2	32.5	23	1.413	Ronnie Coutu	9.53	0-3	0-1	0-3	0-0	2-0	2.0	9	0.222		
<u>Team America : APPLES Division</u>										<u>Strokin : BEES Division</u>											
Pete Hall	11.52	1-5	0-2	2-3	0-1	4-1	4.5	19	0.237	Cee Jay Dozar	10.75	5-0	2-3	1-1	1-4	0-2	9.5	19	0.500		
Julie Wilcox	9.74	0-0	3-2	0-0	3-1	0-0	4.0	9	0.444	Carl McMillon	9.99	3-1	5-1	4-3	4-3	5-2	8.5	31	0.274		
Randy Wilcox	13.82	2-4	5-1	3-4	3-4	4-3	12.5	33	0.379	Joyce Owens	7.71	0-5	0-4	4-1	0-4	3-2	3.5	23	0.152		
Galen Johnson	13.71	5-2	1-2	2-3	3-3	2-0	11.0	23	0.478	Greg Conaway	13.49	3-2	3-2	1-2	0-3	3-0	4.5	19	0.237		
Rob Radcliff	14.34	3-3	0-2	1-6	2-1	3-3	6.0	24	0.250	Peggy Jackson	7.94	3-3	1-1	3-3	3-3	5-0	0.0	25	0.000		
Sal Reitano	15.58	1-0	3-2	1-2	1-3	2-3	13.0	18	0.722	J.J. Gleim	11.22	0-0	0-0	0-0	0-0	0-0	0.0	0	0.000		
Tom Flood	13.78	1-1	1-4	1-0	0-3	1-2	5.0	14	0.357	Ashleigh Varn	7.16	1-2	0-6	3-2	0-3	4-2	2.0	23	0.087		
<u>Whatever : APPLES Division</u>										<u>The Crackheads : BEES Division</u>											
Dennis Keever	17.28	3-3	5-1	3-2	3-3	2-1	33.5	26	1.288	Paula Brown	10.46	1-1	2-5	0-2	4-2	2-2	5.5	21	0.262		
Priscilla Mills	8.58	1-5	1-1	1-5	1-1	3-3	1.5	22	0.068	Fon Denton	9.78	4-3	2-4	0-5	4-3	2-5	8.5	32	0.266		
Don Richards	7.96	3-4	0-3	3-3	1-4	2-2	3.0	25	0.120	Donald Grubb	14.20	5-0	4-1	2-3	2-3	1-4	13.5	25	0.540		
Mike Dwight	12.91	0-6	2-4	1-1	1-5	3-2	13.0	25	0.520	Cyndi Chase	9.07	1-4	0-1	0-5	0-0	0-3	0.0	14	0.000		
Christopher Mori	13.27	1-0	2-3	1-4	2-2	3-1	9.5	19	0.500	Neal Harrington	8.36	1-3	2-2	2-4	2-2	2-2	3.0	22	0.136		
Eddie Jackson	10.91	2-0	1-5	1-3	2-3	3-3	4.5	23	0.196	Chris Smith	13.42	2-3	3-2	2-3	2-4	1-4	16.0	26	0.615		
<u>Chapel Heel Boyz : ARROWS Division</u>										<u>Armed &amp; Hammered : BIRDS Division</u>											
Danny Buckles	13.68	3-1	1-2	3-1	2-0	2-2	13.0	17	0.765	Kenny Johnson	12.04	3-1	5-2	2-4	4-3	4-3	6.0	31	0.194		
Steve Witz	15.16	3-2	3-2	2-1	4-1	2-2	12.5	22	0.568	Keaton Mann	11.27	4-3	3-3	4-2	4-2	4-2	8.0	31	0.258		
James Mathewson III	11.676	0-0-5	2-4	4-2	1-4	12.0	28	0.429	Wil James	13.33	1-3	1-3	3-3	4-2	2-3	13.5	25	0.540			
Corey O'Malley	9.94	0-3	0-2	2-1	0-2	0-2	1.0	12	0.083	Mike Burton	11.69	5-2	1-5	1-4	3-3	3-3	9.5	30	0.317		
Matt Varnadoe	14.23	1-1	2-1	2-1	3-0	1-2	8.5	14	0.607	Tommy Meeks	11.06	4-2	1-4	2-3	1-2	3-1	3.5	23	0.152		
Dave Annas	20.23	3-0	3-2	2-2	4-1	2-3	31.0	22	1.409	Justin Griffith	10.53	0-0	0-0	0-0	0-0	0-0	0.0	0	0.000		
<u>Poke 'N Hope : ARROWS Division</u>										<u>Evilution : BIRDS Division</u>											
Tony Aichele	11.83	2-0	1-1	1-1	1-1	1-1	4.0	10	0.400	Hammer Ammerman	10.761	21-1	1-1	2-1	1-1	0.0	12	0.000			
Brett Leyburn	13.04	1-5	3-3	3-3	0-6	0-6	8.0	30	0.267	Adom Lubitz	15.52	2-3	6-1	3-3	4-3	3-3	22.0	31	0.710		
Lars Sauls	15.38	2-3	3-3	2-4	1-5	1-5	9.5	29	0.328	Jimi Brooks	9.27	2-5	0-1	2-5	1-1	2-3	4.5	22	0.205		
Bob Ziemendorf	10.61	1-3	0-4	1-3	2-1	1-3	7.5	19	0.395	Dominic Mussatti	12.68	1-2	0-1	1-2	3-1	1-2	1.5	14	0.107		
Dave Oholendt	9.99	4-1	0-4	2-3	0-5	0-4	6.0	23	0.261	Willie Phillips	8.71	0-0	1-4	0-1	1-1	1-1	7.0	10	0.700		
Tom Thompson	13.98	2-2	3-2	1-3	2-3	1-4	18.5	23	0.804	Reggie Edwards	9.50	1-1	1-3	2-1	0-2	1-2	1.0	14	0.071		
<u>The Grinnin' Gorillas : ARROWS Division</u>										David Limer											
Jason Kilts	17.53	3-3	1-2	1-3	4-2	2-2	26.5	23	1.152	9.65	3-2	2-1	1-2	3-0	3-3	3.0	20	0.150			
Tom Brown	20.63	6-1	5-2	1-3	5-1	2-2	47.0	28	1.679	Jon Tofte	9.73	0-3	3-2	2-1	2-3	0-1	4.0	17	0.235		
Mark Knight	21.75	3-2	4-0	4-2	3-2	5-0	41.5	25	1.660	<u>In Through the Out Door : BIRDS Division</u>											
Wil Tan	21.23	3-0	2-2	3-0	3-0	2-2	31.5	17	1.853	Kyle Mills	9.70	4-3	0-2	5-2	3-3	1-6	10.5	29	0.362		
Dale Hyler	18.12	3-0	2-2	5-0	3-1	2-3	24.0	21	1.143	John Poteat	15.45	0-1	1-0	0-1	0-0	0-0	3.0	3	1.000		
Paul Jacobi	14.90	2-2	3-3	6-0	4-0	3-3	19.5	26	0.750	Kevin Staring	14.33	0-0	0-0	0-0	0-0	0-0	0.0	0	0.000		
<u>W.T.F.A.Y.L.A. : ARROWS Division</u>										Hugh Findlay	11.35	2-4	4-3	1-1	4-3	1-6	16.5	29	0.569		
John Strobel	14.98	3-2	4-2	2-4	5-1	3-3	17.0	29	0.586	Peter Hoffmann	13.28	2-3	5-2	5-2	3-3	1-4	16.5	30	0.550		
John Willman	14.94	1-4	3-0	4-1	2-1	3-1	8.5	20	0.425	John Riddle	11.38	3-1	1-4	5-0	1-3	0-4	5.0	22	0.227		
Ed Chase	13.72	2-5	5-1	4-3	3-3	3-3	24.0	32	0.750	Andrew Stahl	10.18	1-4	3-3	4-2	3-2	1-4	9.5	27	0.352		
Gage Vogele	14.13	1-3	1-3	1-1	1-3	2-1	5.5	17	0.324	<u>More Cowbell : BIRDS Division</u>											
PJ Sullivan	15.09	3-2	6-1	3-4	3-4	4-3	25.0	33	0.758	Player	Hppd	301	Crk	601	Dcrk	801	Asp	gms	ASP %		
<u>Scrabble : BEES Division</u>										Robby Crownover	9.97	5-1	2-3	3-3	3-3	4-3	4.0	30	0.133		
Mike Litzsinger	15.16	0-2	3-1	4-1	1-4	2-2	19.0	20	0.950	Don Moore	14.23	4-2	7-0	4-3	5-2	3-3	20.5	33	0.621		
Marian Kirk	8.38	1-5	0-1	6-1	4-2	5-2	3.5	27	0.130	Ed Bahor	14.60	5-1	5-2	3-2	4-2	4-2	22.0	30	0.733		
James Sutton	10.42	2-2	3-3	4-1	2-3	4-0	13.5	24	0.563	Nat Hammer	10.87	2-4	1-3	3-2	3-1	3-3	7.5	25	0.300		
Jerry Shengulette	15.20	5-0	5-1	0-0	5-1	4-1	25.0	22	1.136	Mike Reynolds	16.86	4-0	3-2	5-0	3-2	2-1	18.5	22	0.841		

Team	Pts	301	Crk	601	Dck	801	ASP	W/L	SPPD	
<b>Apples</b>										
<b>**1</b>	<b>Puppies</b>	<b>70</b>	<b>12-12</b>	<b>14-10</b>	<b>9-3</b>	<b>7-5</b>	<b>4-2</b>	<b>136.0</b>	<b>5-2</b>	<b>17.984</b>
2	Dee Dee Dee	65	15-13	14-14	6-8	6-8	4-3	98.0	2-5	13.704
3	Team America	60	13-15	13-15	5-9	6-8	4-3	56.0	4-3	13.417
4	Whatever	53	10-18	11-17	5-9	5-9	4-3	65.0	2-5	12.257
<b>Arrows</b>										
1	The Grinnin' Gorillas	91	20-8	17-11	10-4	11-3	4-3	190.0	7-0	18.444
2	W.T.F.A.Y.L.A.	70	10-18	20-8	7-7	7-7	4-3	83.0	3-4	14.003
<b>**3</b>	<b>Chapel Heel Boyz</b>	<b>63</b>	<b>16-8</b>	<b>9-15</b>	<b>7-5</b>	<b>9-3</b>	<b>2-4</b>	<b>78.0</b>	<b>4-3</b>	<b>13.684</b>
4	Poke 'N Hope	41	12-16	10-18	5-9	3-11	1-6	53.5	1-6	12.329
<b>Bees</b>										
1	Scrabble	77	15-13	13-15	10-4	7-7	5-2	67.0	5-2	11.238
2	Strokin'	65	15-13	11-17	8-6	4-10	5-2	28.0	3-4	9.621
3	The Crackheads	53	14-14	13-15	3-11	7-7	2-5	46.5	2-5	10.267
4	Shoot to Thrill	48	9-19	18-10	4-10	6-8	4-3	53.5	2-5	11.141
<b>Birds</b>										
1	More Cowbell	86	20-8	18-10	9-5	9-5	4-3	72.5	6-1	13.321
2	Armed & Hammered	68	17-11	11-17	6-8	8-6	4-3	40.5	5-2	11.526
3	In Through the Out Door	63	12-16	14-14	10-4	7-7	1-6	61.0	3-4	10.851
4	Evolution	58	10-18	14-14	6-8	8-6	3-4	43.0	2-5	10.892
<b>**Still Pending Week 6 Puppies @ Chapel Heel Boyz</b>										

**Hot Darts Summer 2006**

Low Singles 301	Low Singles Cricket	High Outs
<p>A Division</p> <p>11 (301) Michael Lovelace 05/16/06</p> <p>11 (301) Lars Sauls 06/30/06</p> <p>B Division</p> <p>12 (346) Mike Reynolds 05/30/06</p>	<p>A Division</p> <p>21 (+60) Mike Seward 5/30/06</p> <p>B Division</p> <p>20 (+20) Adom Lubitz 6/13/06</p>	<p>A Division</p> <p>T13 Dave Annas 05/23/06</p> <p>B Division</p> <p>99 Don Moore 06/20/06</p>
Low Doubles 601	Low Doubles Cricket	Low 4-Person 801
<p>A Division</p> <p>23 (631) Doug Jeffcoat/ Bob Grayckowski 06/20/06</p> <p>B Division</p> <p>30 (616) David Limer/Adom Lubitz 05/30/06</p>	<p>A Division</p> <p>19 Wil Tan/Dale Hyler 5/30/06</p> <p>B Division</p> <p>39 (+0) Peter Hoffman/Kyle Mills 05/02/06</p> <p>39 (+0) Marian Kirk/ Jerry Shengulette 6/13/06</p>	<p>A Division</p> <p>41 (971) Mark Knight/Tom Brown/Jason Kilts/ Paul Jacobi 05/16/23</p> <p>B Division</p> <p>41 (801) Peter Hoffmann/Hugh Findlay/ Andrew Stah/Kyle Mills 05/23/06</p>
Perfect Throws	Perfect Throws	
<p><b>Ton 80s</b></p> <p>Mark Boudreaux 04/22/06 (LOD)</p> <p>Jason Kilts 05/02/06</p> <p>Tom Redick 05/16/06</p> <p>Dale Hyler 6/13/06</p> <p><b>9 Mark</b></p> <p>Michael Lovelace 5/9/06</p> <p>Danny Buckles 5/9/06</p> <p>John Poteat 5/23/06</p> <p>PJ Sullivan 6/6/06 (LOD)</p> <p>Dale Hyler 6/13/06</p> <p>Adom Lubitz 6/13/06</p> <p>John Riner 6/20/06</p>	<p><b>Ton 77s</b></p> <p>Paul Jacobi 05/16/06</p> <p>8 Marks (trip, trip + 2B)</p> <p>Jerry Shengulette 05/23/06</p> <p>7 (Trip,DB,DB)</p> <p>None Reported</p> <p>6 Bulls</p> <p>None Reported</p>	